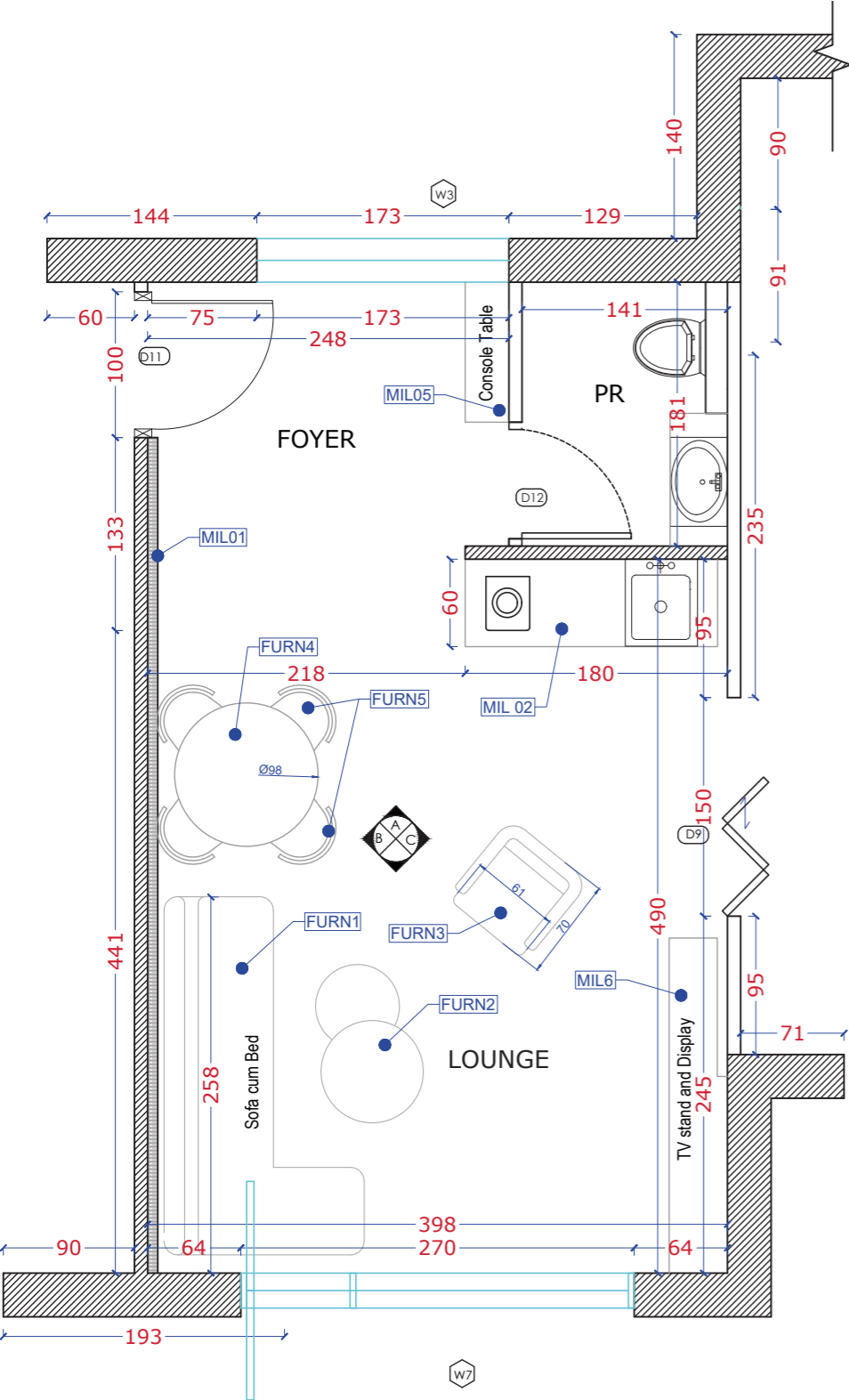




P07 | SOYAL

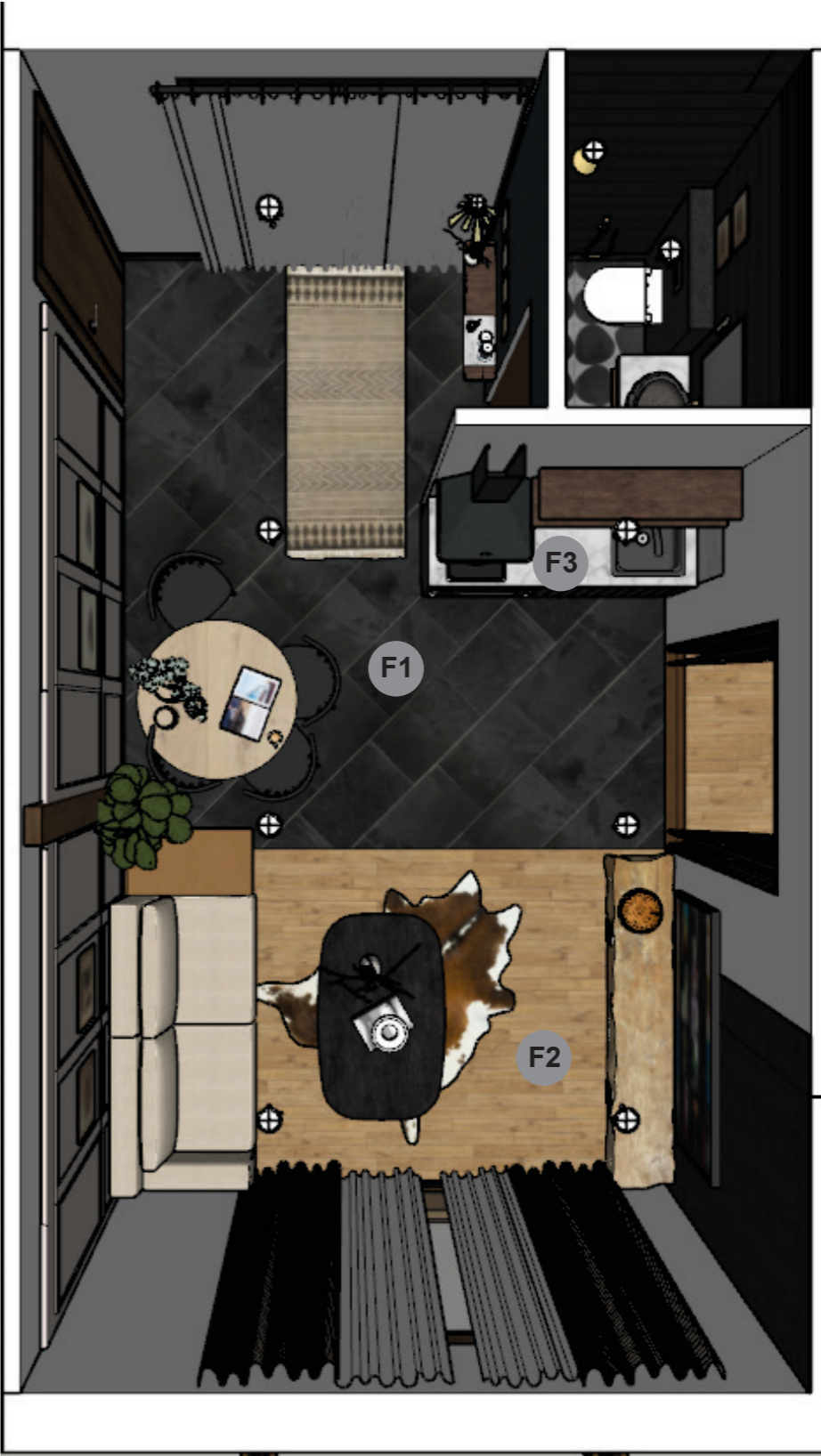
FIRST FLOOR
SUITE LOUNGE

FIRST FLOOR SUITE LOUNGE
FLOORPLAN



1 LOUNGE- FIRST FLOOR
FLOORPLAN

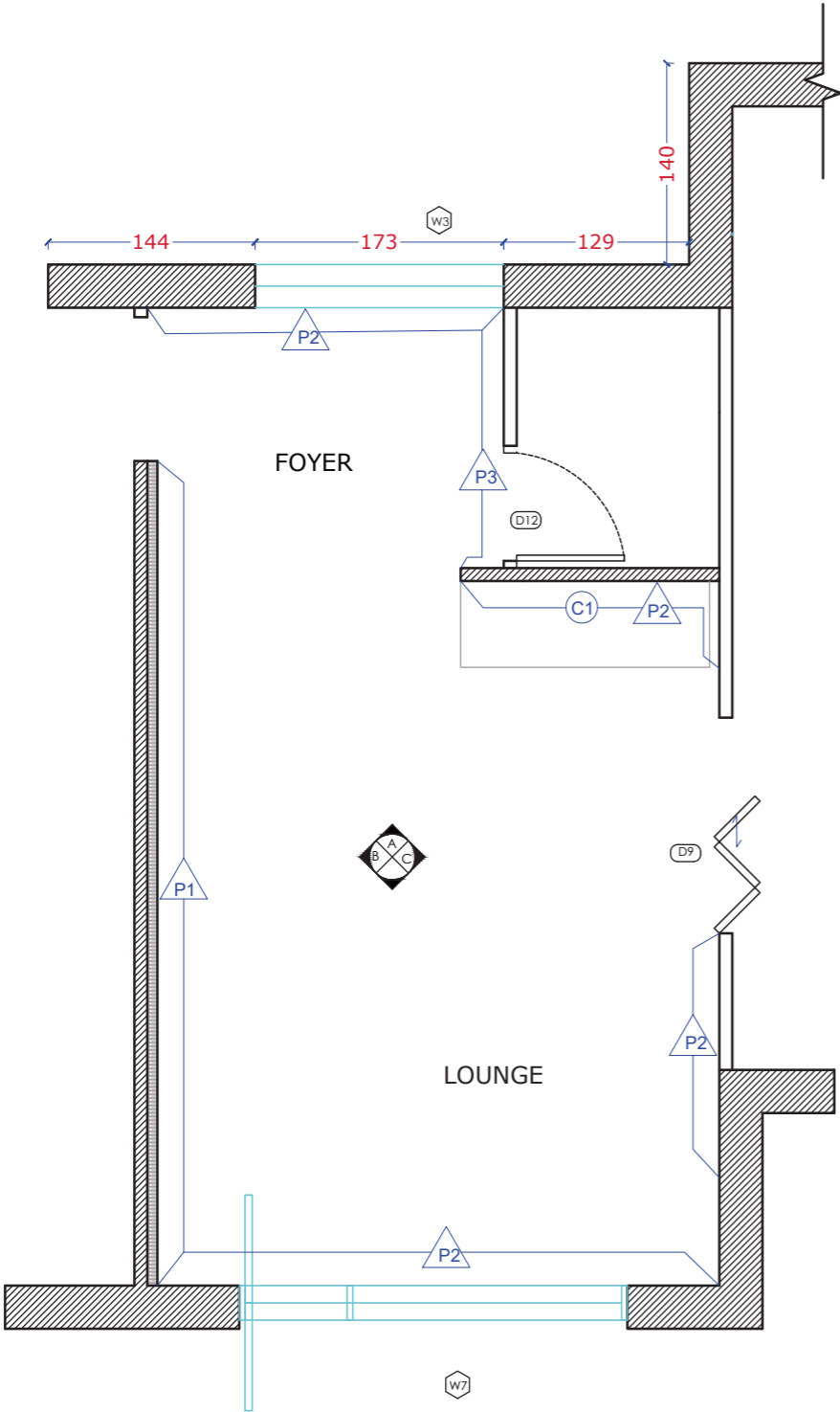
FLOOR FINISH PLAN



2 LOUNGE - FIRST FLOOR
FLOOR FINISH PLAN

| Code | Details | Area/BR | tot Area | Budget | Total |
|------|---|----------|----------|--------|--------|
| F1 | 18"x 30" katappa or black tile with 5mm spacer and white epoxy grouting | 170 sqft | 340 sqft | 70 | 23,800 |
| F2 | Wooden Planks 8"x24" | 115 sqft | 230 sqft | 60 | 13,800 |
| F3 | Full body tile in selected colour 2'6"x8' slab | 1 slab | 2 slab | 110 | 4,576 |

FINISH SCHEDULE
KEY PLAN



3 LOUNGE - FIRST FLOOR
WALL FINISH KEY

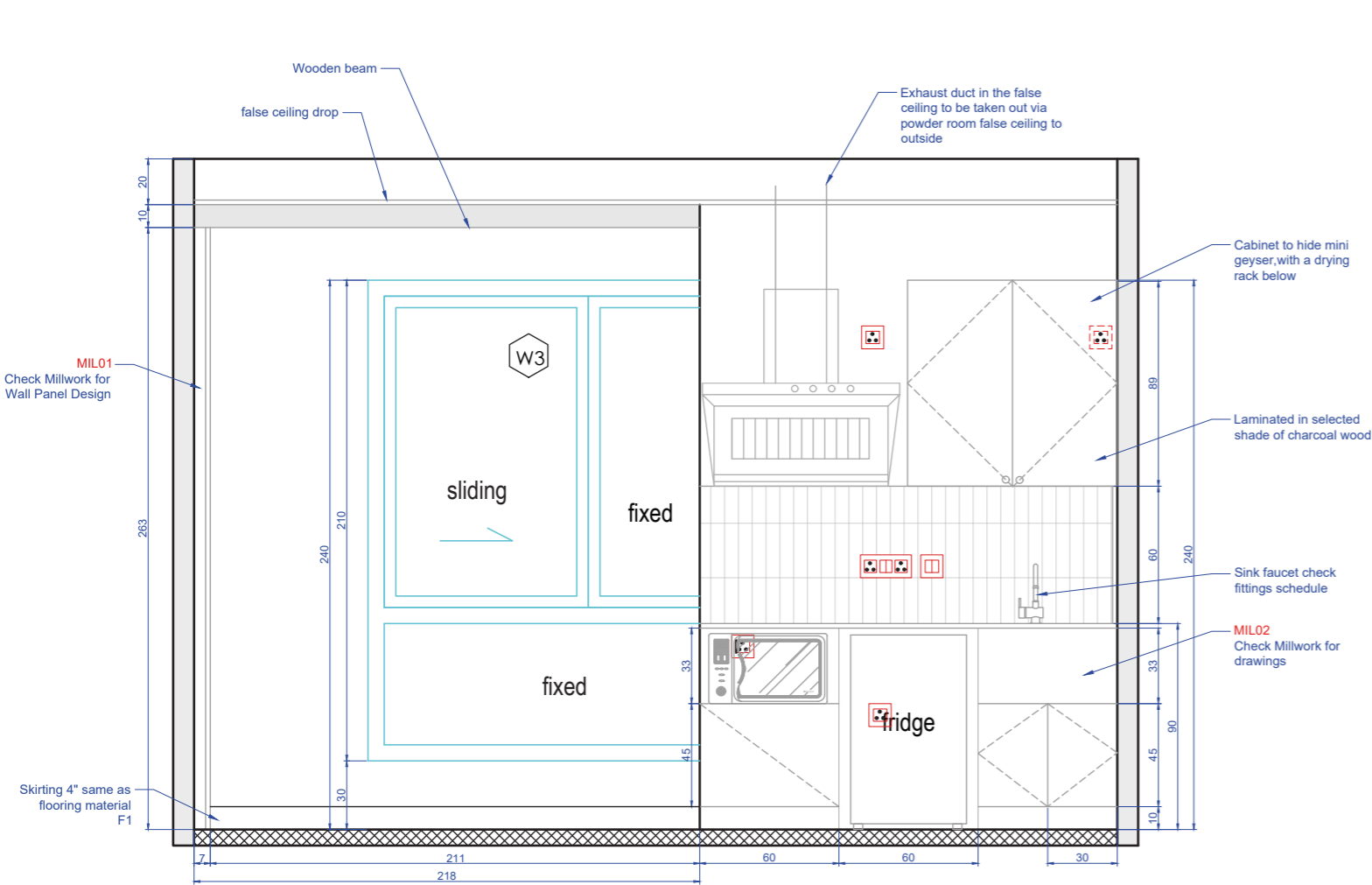
| FIRST FLOOR LOUNGE WALL FINISH SCHEDULE | | | | |
|--|---------------------------|---|----------|----------|
| Code | Type | Details | Area | tot area |
| P1 | PU Paint | in the shade 0940 Antique white 8554 Heritage hill (sample and decide) to be sprayed with compressor and satin finish | 150 sqft | 300 sqft |
| P2 | Premium Satin Emulsion | Asian Paints L108 Cream Pudding | 182 sqft | 364 sqft |
| P3 | Wood Stain | Asian paints charcoal with matte top coat melamyne | 40 sqft | 80 sqft |
| C1 | Tile | 3"x9" spanish tiles in cream with same shade of epoxy grouting | 15 sqft | 30 sqft |



C1: Subway tiles
3"x9" Spanish Tiles in
cream

ELEVATION A
MEASUREMENTS

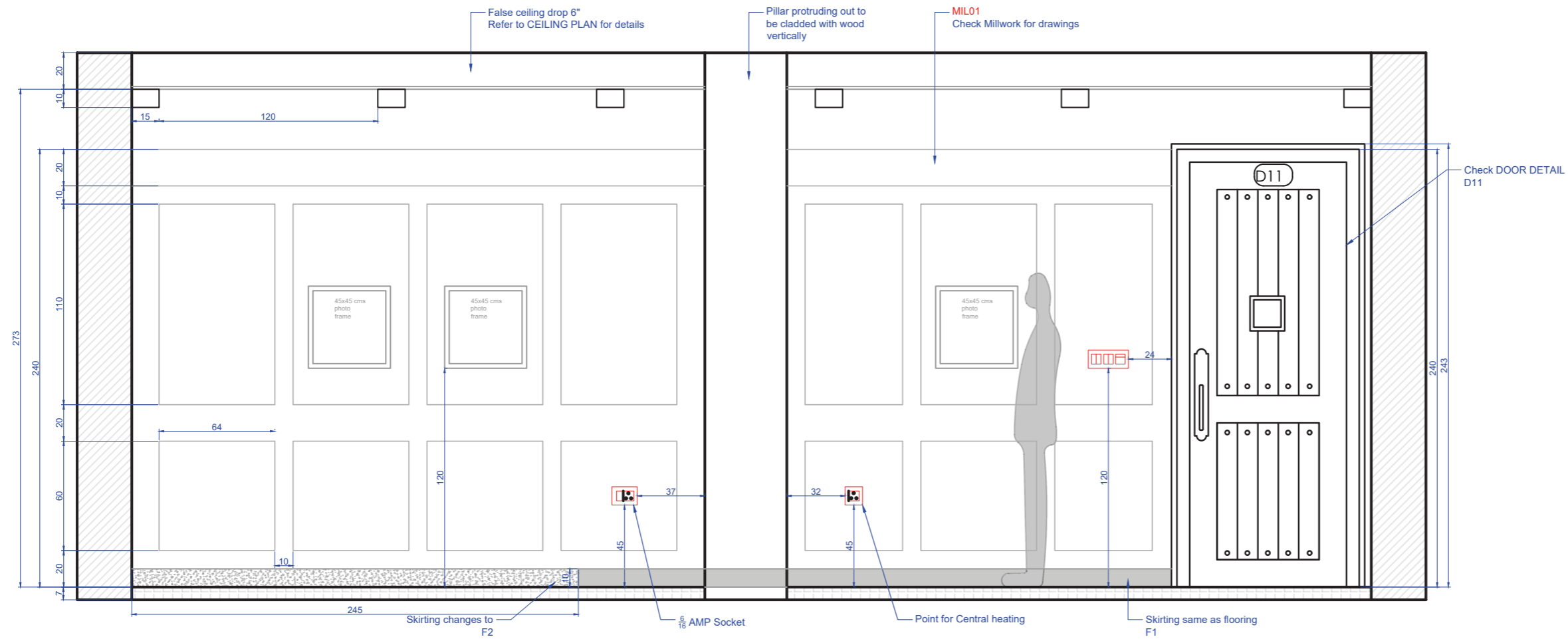
ELEVATION A
FINISHES



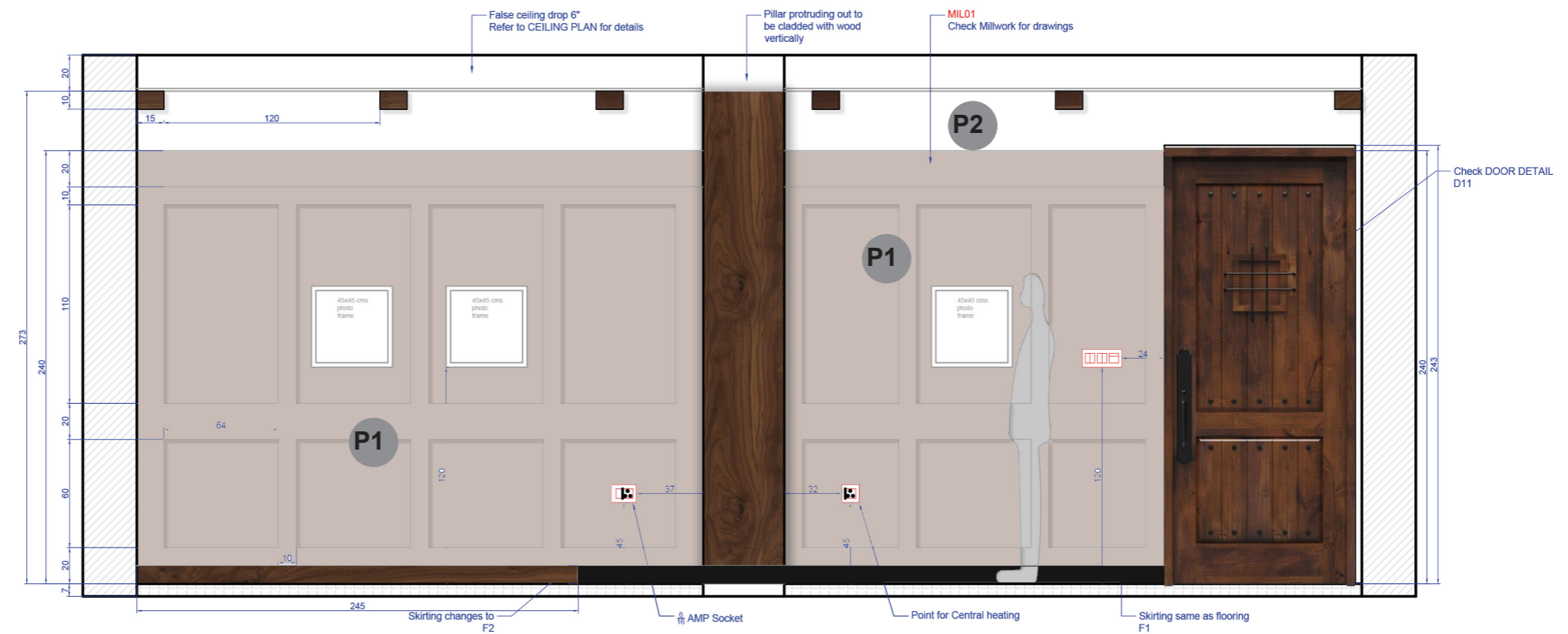
A ELEVATION A
KITCHEN AND FOYER

| P07 SOYAL FOR MR. JITENDER THAKUR FITTINGS AND FIXTURES FIRST FLOOR KITCHENS - 2Nos. | | | | | | | | | Total | ₹62,942.00 |
|--|-----------------|----------|---|----------------------|------|-----------|-------|-----|------------|------------|
| | | | | | | | | | Final | ₹62,942.00 |
| S . No | ITEM | BRAND | DESCRIPTION | DIMENSIONS | CODE | COLOUR | PHOTO | QTY | MRP/Unit | TOTAL |
| 1 | Sink Bowl | Any | | | | Chrome SS | | 2 | ₹4,000.00 | ₹8,000.00 |
| 2 | Faucet | Amazon | Kitchen Sink Faucet with Pull Down Sprayer in Stainless Steel, Dratal Pull Out Sprayer Faucet Kitchen Flexi Spout Brushed Steel (DT -1) | | | Chrome | | 2 | ₹4,999.00 | ₹9,998.00 |
| 3 | Hood | ELICA | Elica 60 cm 1100 m3/hr Chimney (AH 260 BF Nero, 2 Baffle Filters, Push Button Control, Black) | 60 x 28.5 x 32.5 Cms | | Black | | 2 | ₹6,998.00 | ₹13,996.00 |
| 4 | Induction Plate | WIPRO | Wipro Enterprises(P) Ltd 2000 watt Induction Cooktop Sensor Feather Touch (Black) with Crystal Glass Plate | | | Black | | 2 | ₹2,899.00 | ₹5,798.00 |
| 5 | Geyser | CROMPTON | Crompton Rapid Jet 3-Litre Instant WH (White) | 19 x 18.5 x 36 Cms | | White | | 2 | ₹2,575.00 | ₹5,150.00 |
| 6 | Fridge | | 94 Ltr with max height 85 cms, width 60 cms or less as per client's choice | | | | | 2 | ₹10,000.00 | ₹20,000.00 |

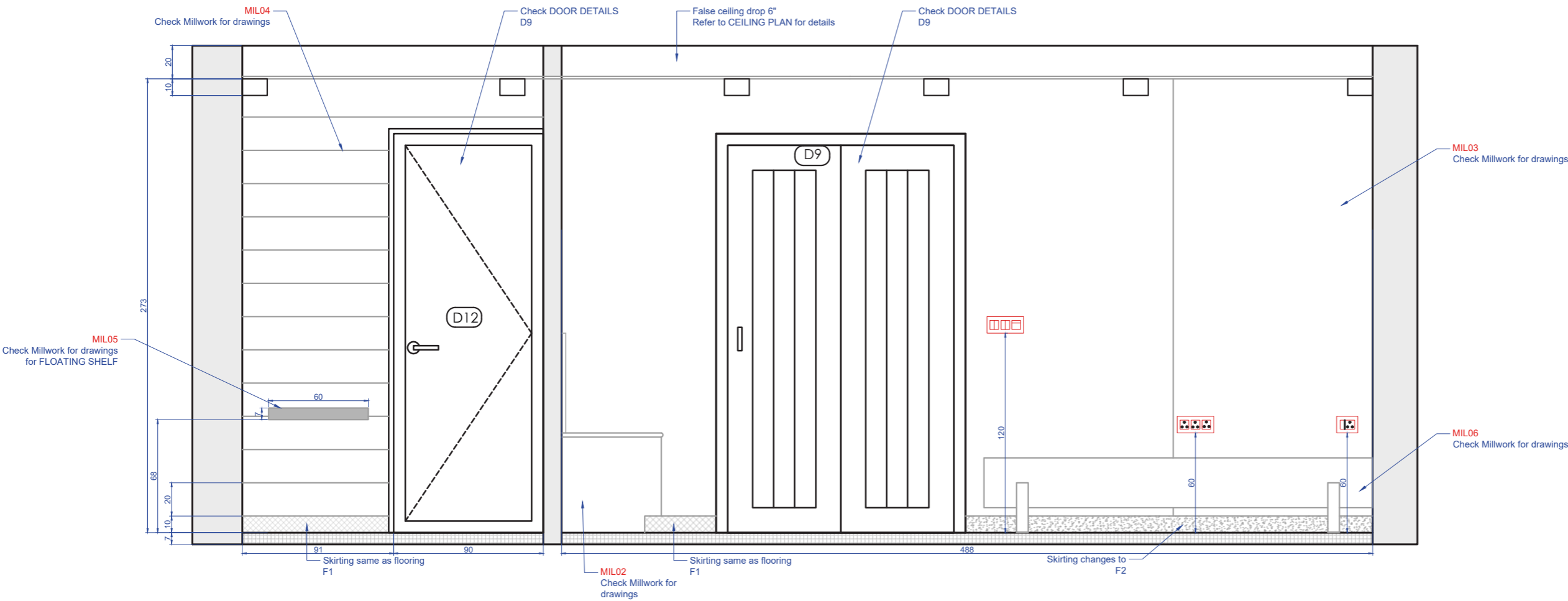
ELEVATION B MEASUREMENTS



ELEVATION B FINISHES



ELEVATION C
MEASUREMENTS

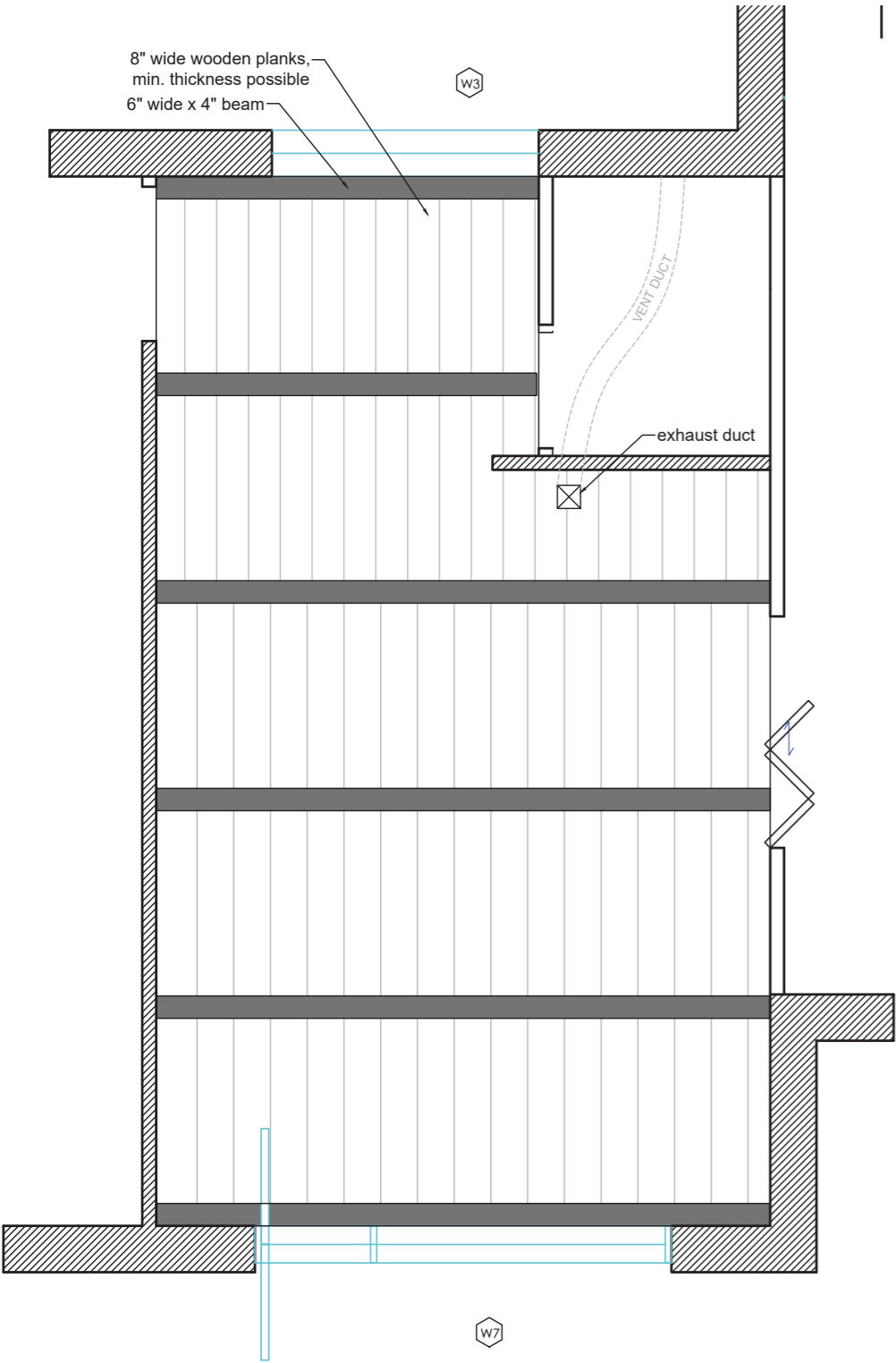


ELEVATION C
FINISHES

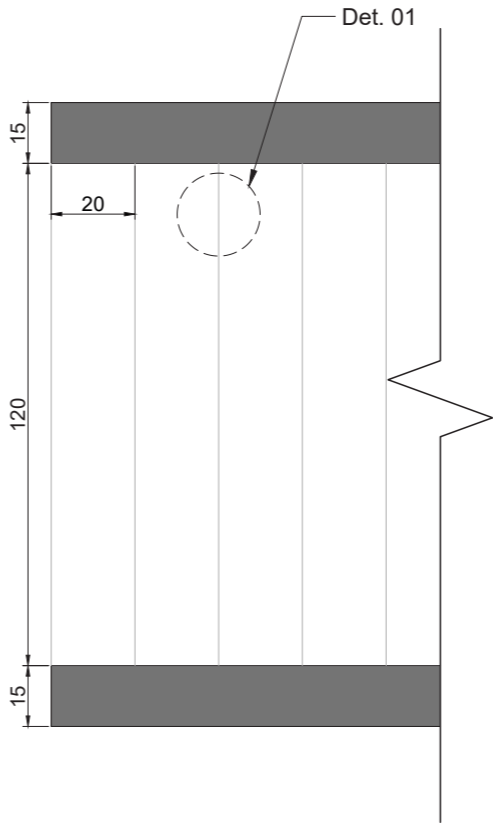
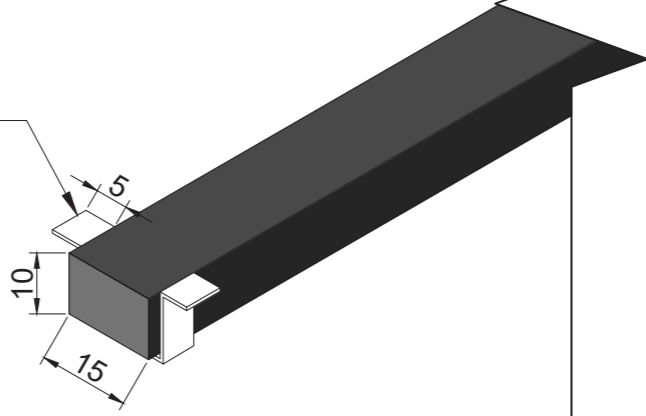


FALSE CEILING PLAN

260 sqft

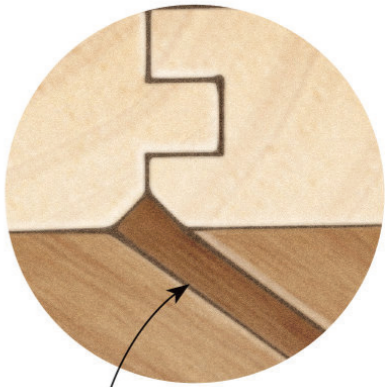
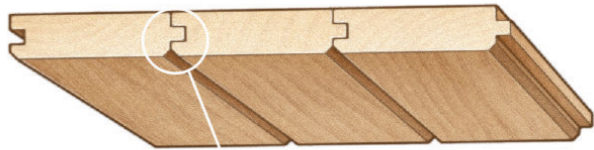


iron support 2" wide
4 nos. placed in each beam



DET. 01
TONGUE & GROOVE LOCK

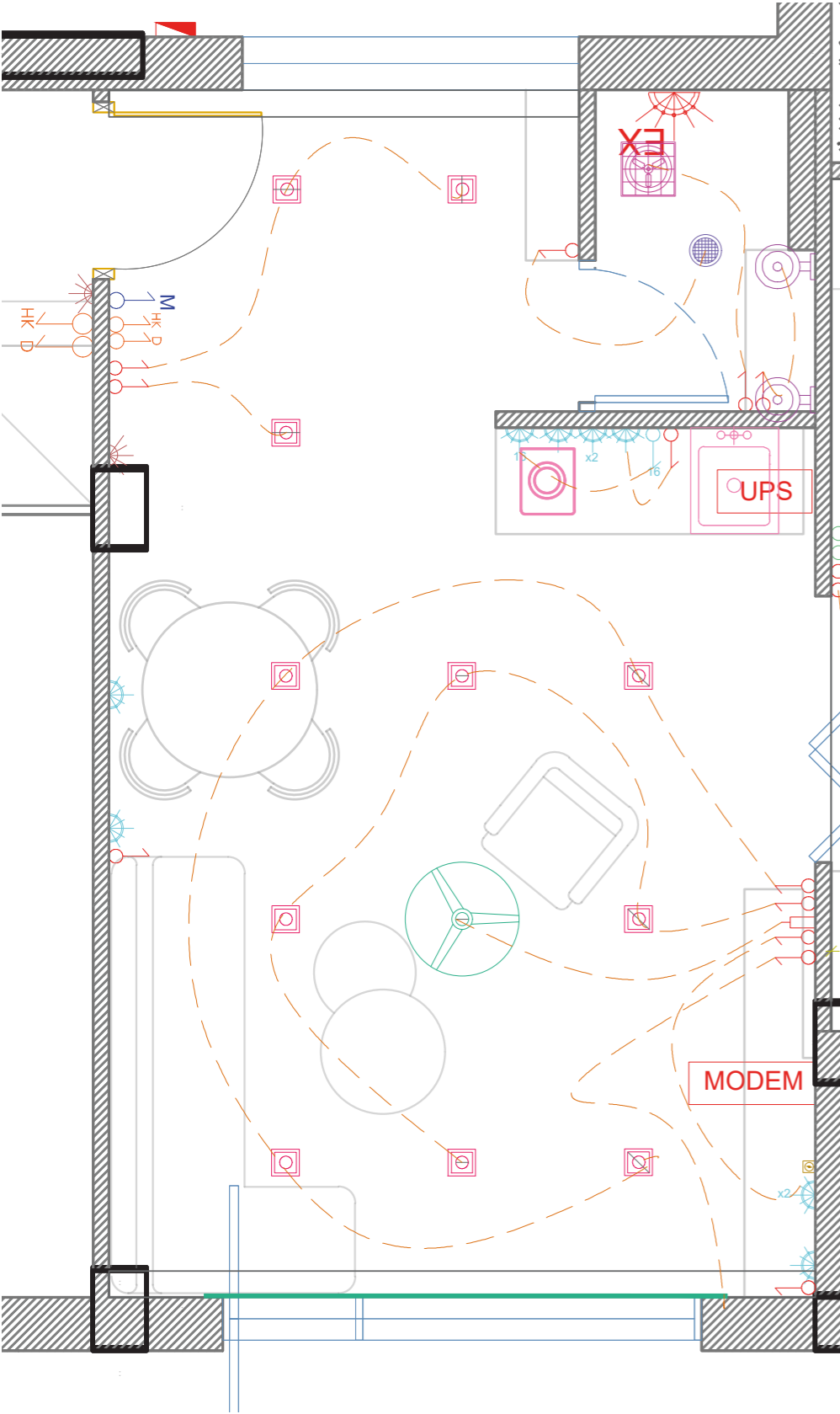
V-groove paneling



Decorative V



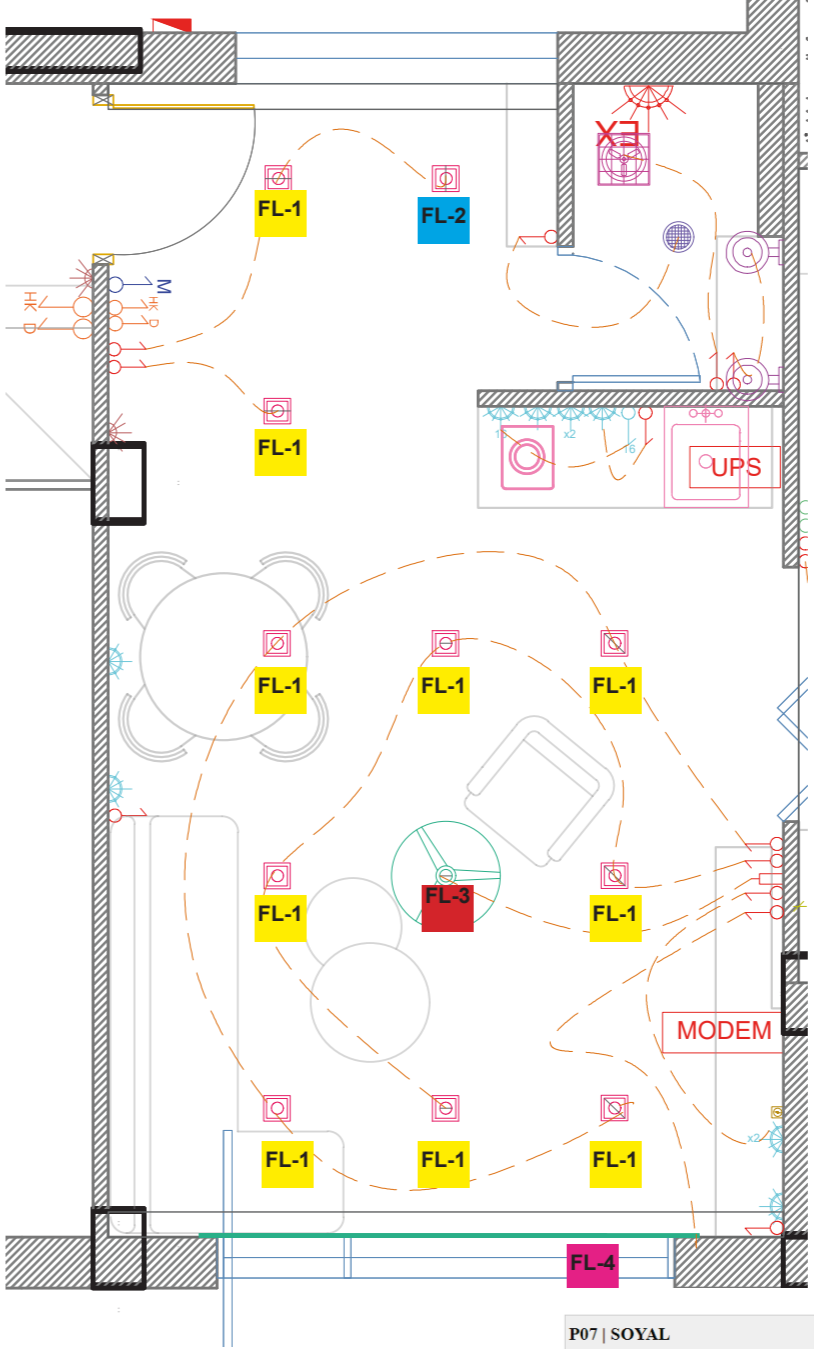
ELECTRICAL PLAN



| ELECTRICAL LEGEND | | | |
|-------------------|------------------------|--|---------------------------------|
| SYMBOL | DESCRIPTION | | |
| | SINGLE WAY SWITCH | | FROM FFL GEYSER POINT @ 2700MM |
| | TWO WAY SWITCH | | TELEVISION CABLE POINT |
| | MASTER SWITCH/KEY CARD | | MODEM |
| | FAN SWITCH + REGULATOR | | EXHAUST POINT @ 2100MM FROM FFL |
| | 6A RP SOCKET | | POWER DISTRIBUTION BOARD |
| | 16A RP SOCKET | | UPS IN KITCHEN LOWER CABINET |
| | INTERNET/DATA POINT | | 16 AMP SWITCH |
| | HOUSE KEEPING | | BUZZER |
| | | | DND |

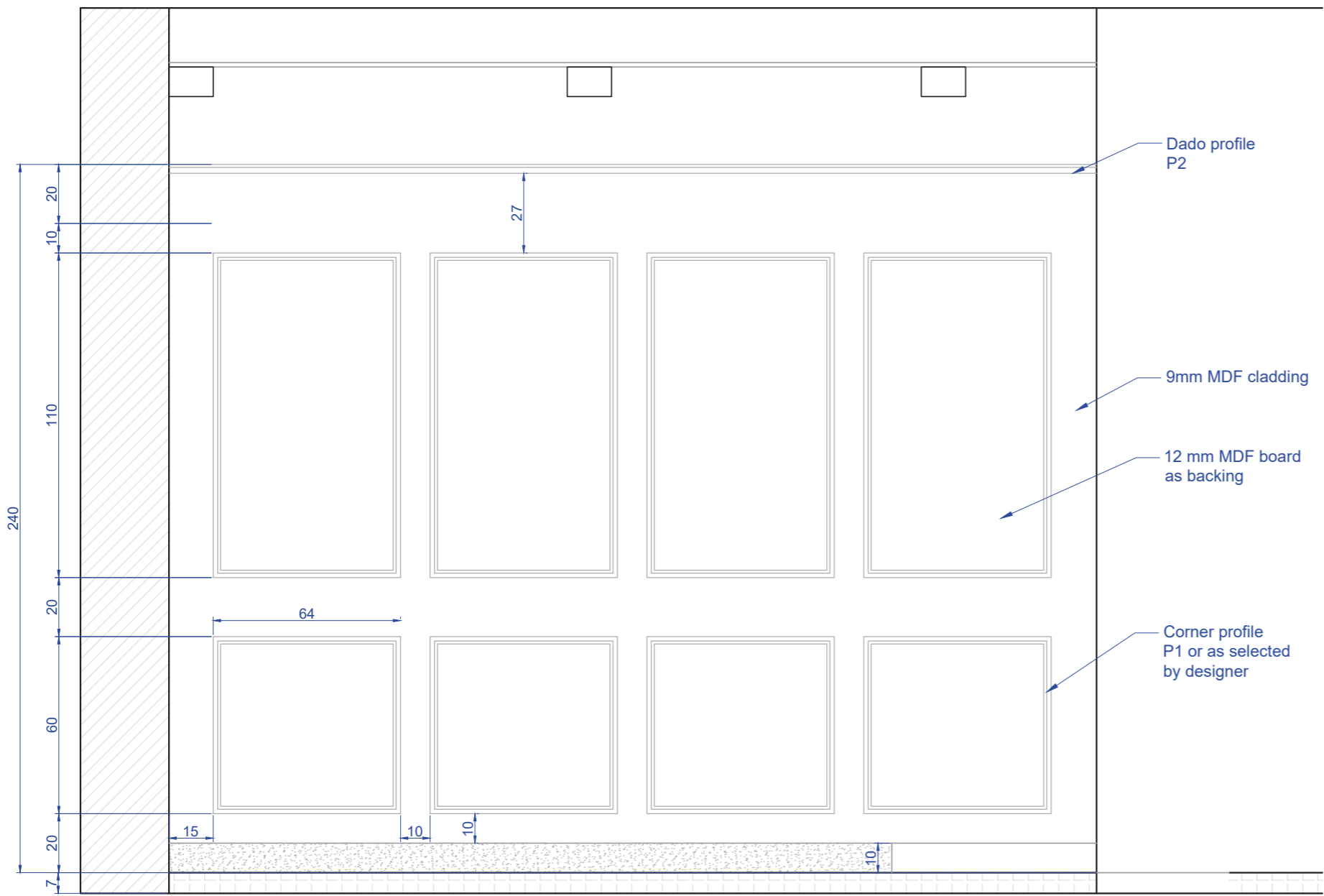
| LIGHTING LEGEND | | | |
|--------------------|--------------------------------|--|---|
| SYMBOL DESCRIPTION | | | |
| | CHANDELIER | | WALL WASHER SPOT LED |
| | PENDANT LIGHT | | PIN SPOT LED |
| | FLOOR LAMP | | CONCEALED LINEAR LED |
| | TABLE LAMP | | CEILING MOUNTED LIGHT |
| | WALL BRACKET @ 2100MM FROM FFL | | MIRROR LIGHT FOR TOILET |
| | 1POINT CONCEALED LED | | WALL LIGHT POINT FOR WARDROBE @ 2100MM FROM FFL |
| | 2POINT CONCEALED LED | | CONCEALED DOWNLIGHTER LED |
| | 3POINT CONCEALED LED | | SURFACE MOUNTED LED IP67 |
| | 4POINT CONCEALED LED | | 1200MM DIA FAN |
| | WALL BRACKET FAN | | 900MM DIA FAN |
| | UP LIGHT WALL WASHER | | EXHAUST FAN |

LUMINAIRE SCHEDULE

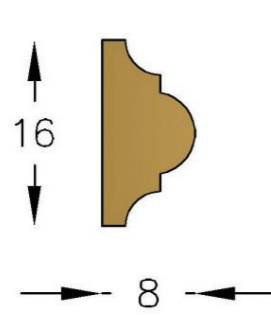


| P07 SOYAL FIRST FLOOR SUITE LOUNGE | | | | | | | | ₹40,352.00 |
|--------------------------------------|-----------------------|---|-----------|----------|--------|------------|-------------|------------|
| Code | Type | Details | Ref Photo | Qty/room | Total | Price/unit | Price Total | |
| FL1 | Recessed Light Linear | CHANGI CH 2121-2-6W 4000K Size : 44x70x45mm | | 10 | 20 | ₹1,000.00 | ₹20,000.00 | |
| FL2 | Recessed Spot Light | CHANGI CH 2139-3W 3000K Size : 79x39mm Body Colour - White | | 1 | 2 | ₹600.00 | ₹1,200.00 | |
| FL3 | Ceiling Fan | Atomberg Renesa 1200mm 28W BLDC 5 Star Rated High Speed Ceiling Fan with Remote(Matt Black) | | 1 | 2 | ₹3,576.00 | ₹7,152.00 | |
| FL4 | Strip Light | CHANGI NEON FLEX-10W WARM WHITE 4K | | 6 mts | 12 mts | ₹1,000.00 | ₹12,000.00 | |

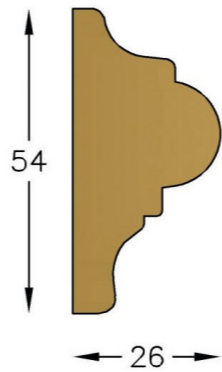
MIL-01
WALL PANELS - WAINSCOTING



P1

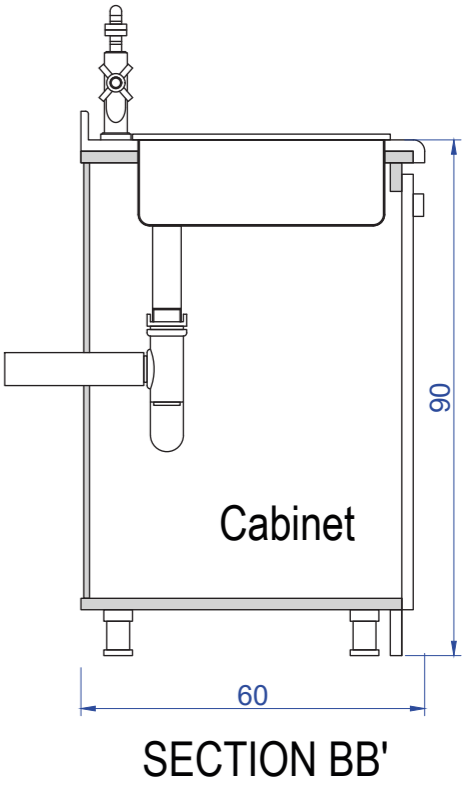
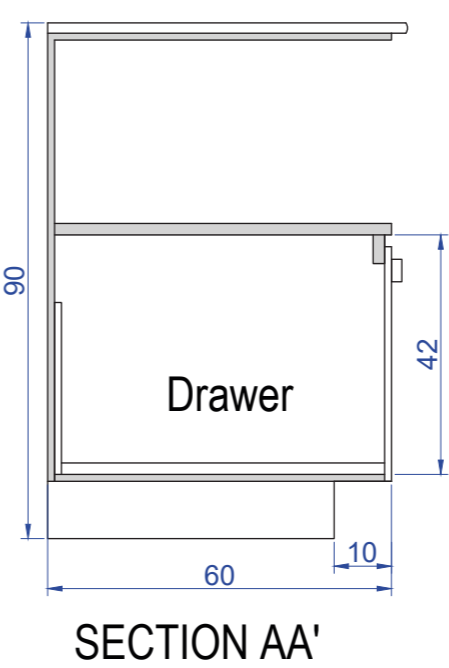
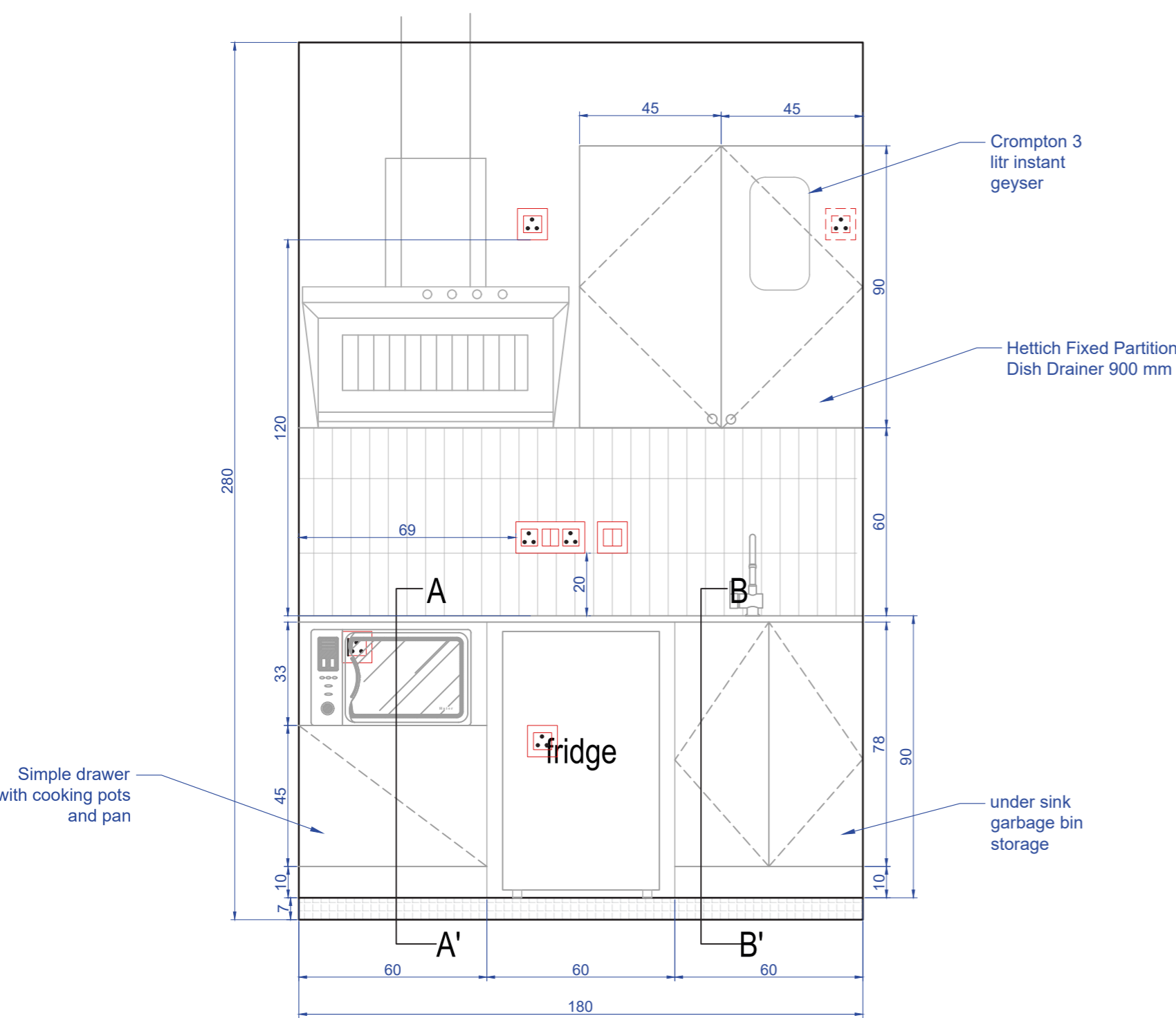


P2



MIL-02

KITCHENNETTE



Hettich 900mm dish drain shelf

Hettich Pots and Pan Box



Dustbin Pullout



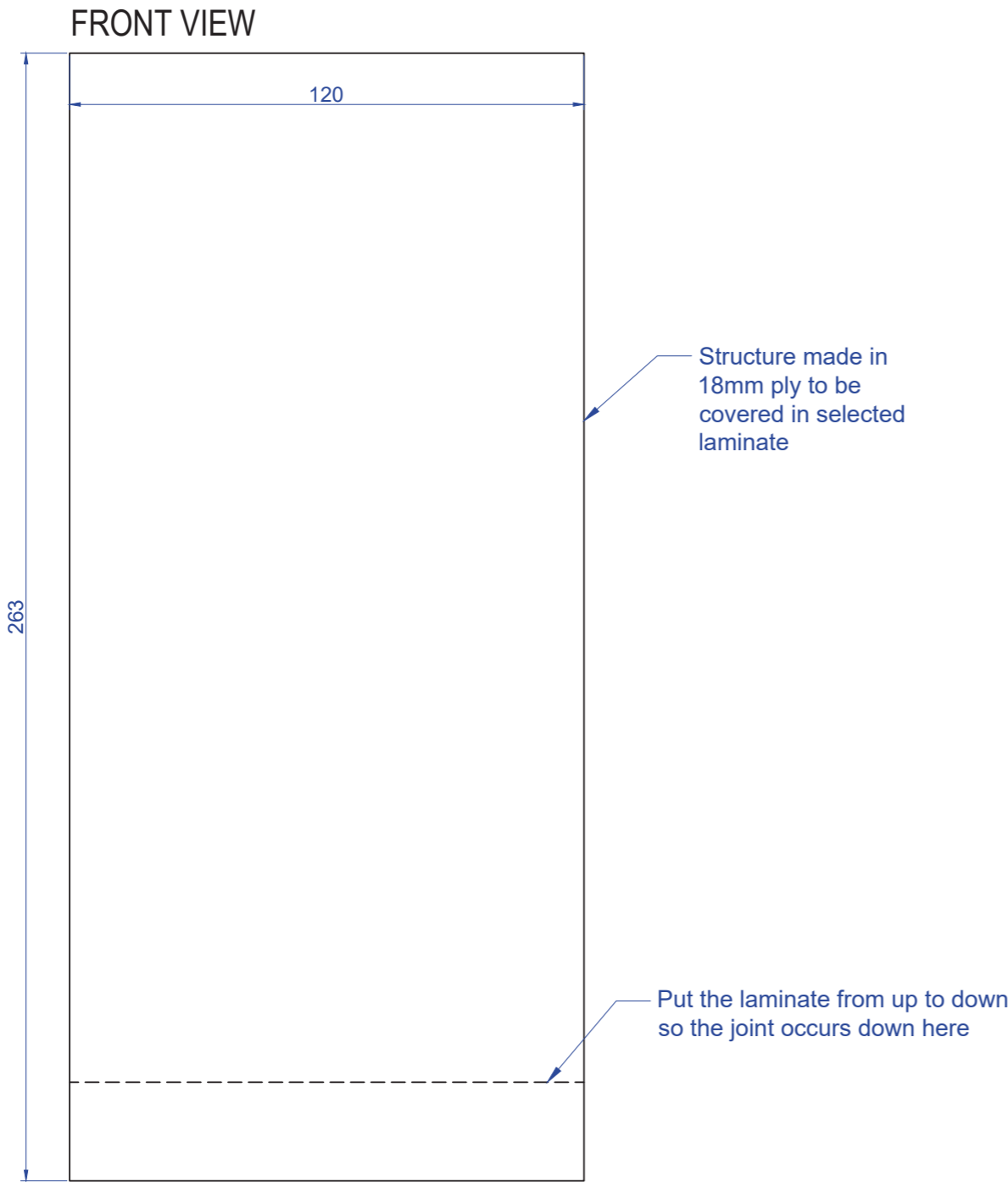
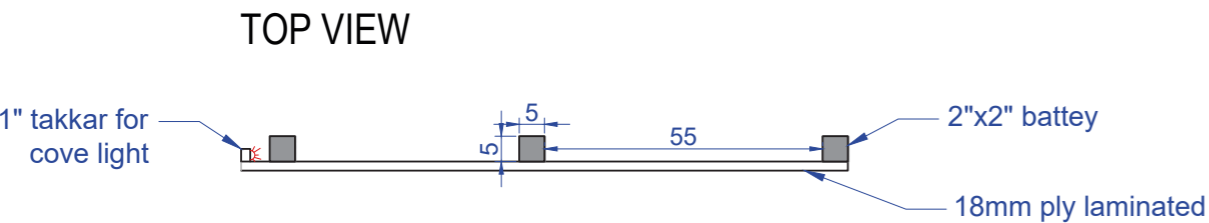
FINISHES:

Top Shelf to be laminated in wooden laminate as selected

Base Shelf laminated in Charcoal Black wood as selected

Insides to be laminated grey

MIL-03
TV PANEL



FINISHES:

Charcoal Black Stone Veneer

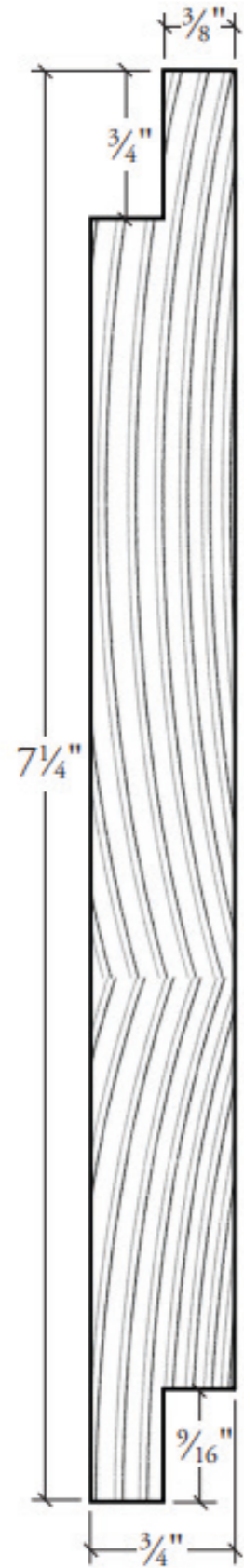


MIL-04

**SHIP LAP WALL SIDING
WITH 3/16" GAP**

FINISH:

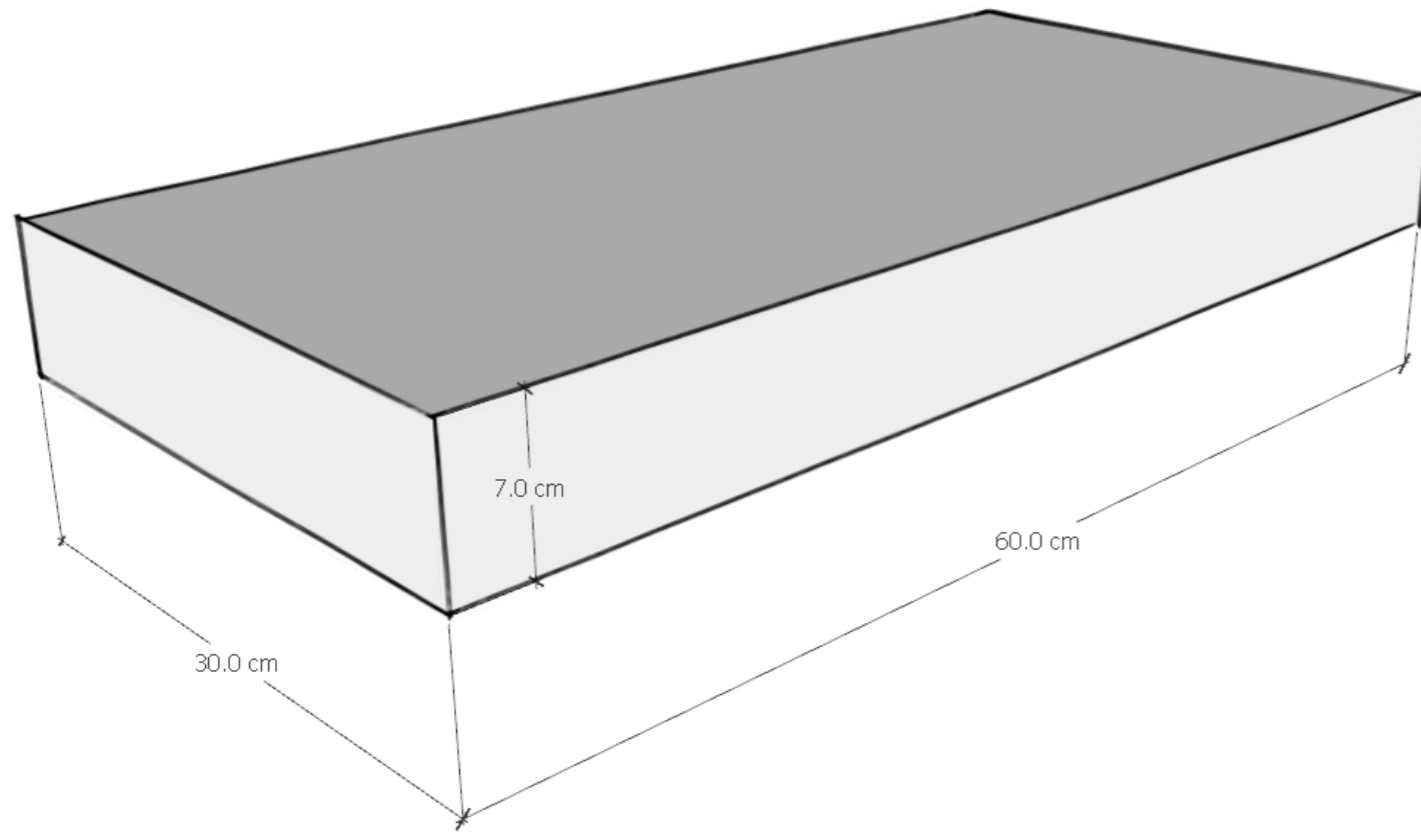
To be stained black



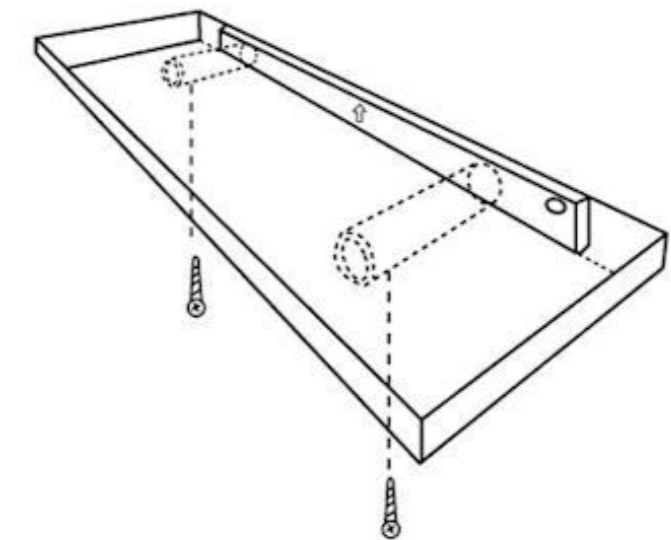
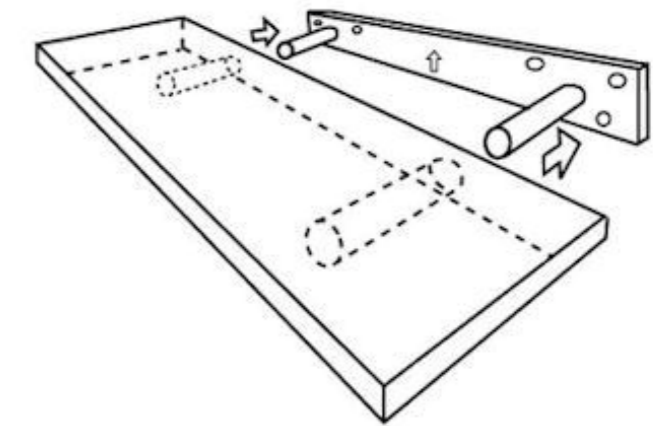
APPLY EDGE
CORNICE TO
FINISH



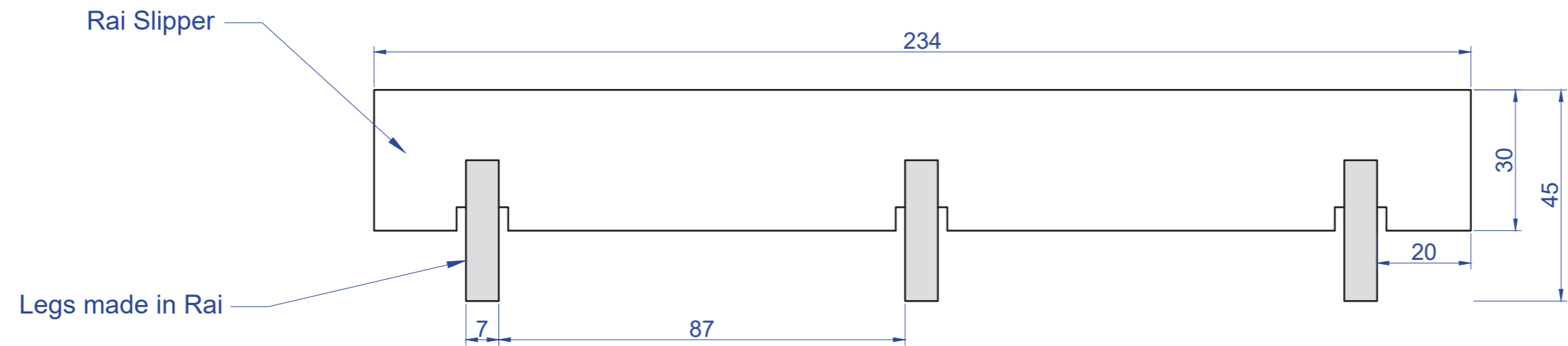
MIL-05
FLOATING SHELF



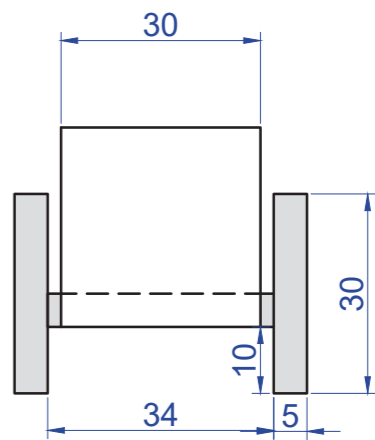
FLOATING SHELF
To be installed with a wall mount bracket that is drilled
into the shelf structure
The mounting structure must not be seen from any
angle once the shelf is locked in



MIL-06
TV CONSOLE

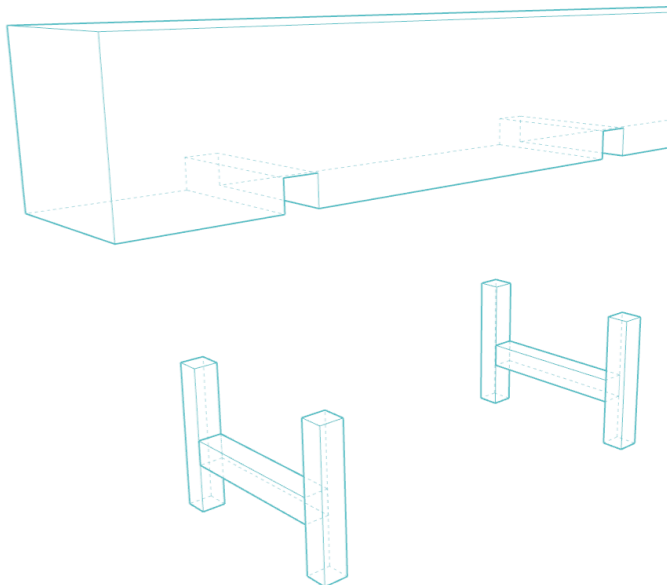
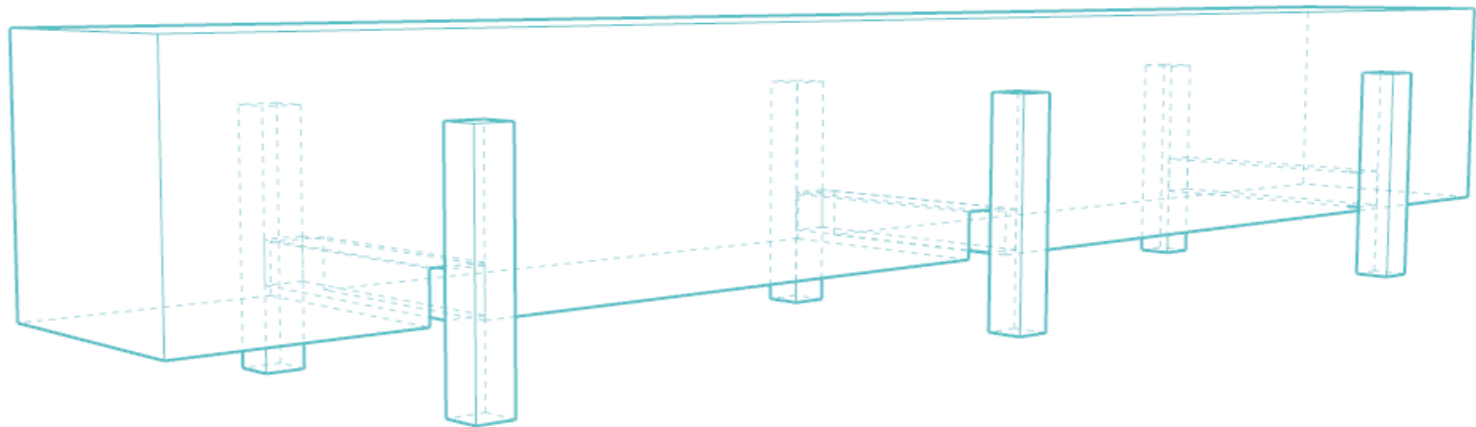


FRONT VIEW



SIDE VIEW

NOTE:
Let the slipper be as rough as possible
legs can be smooth
To be stained in the selected shade and sealed with melamyne matte



Cut out a part of the slipper for the legs to lock in



This is just a reference picture, it looks slightly different from the real product but the concept is similar

FURNITURE

FURN-01
SOFA cum BED



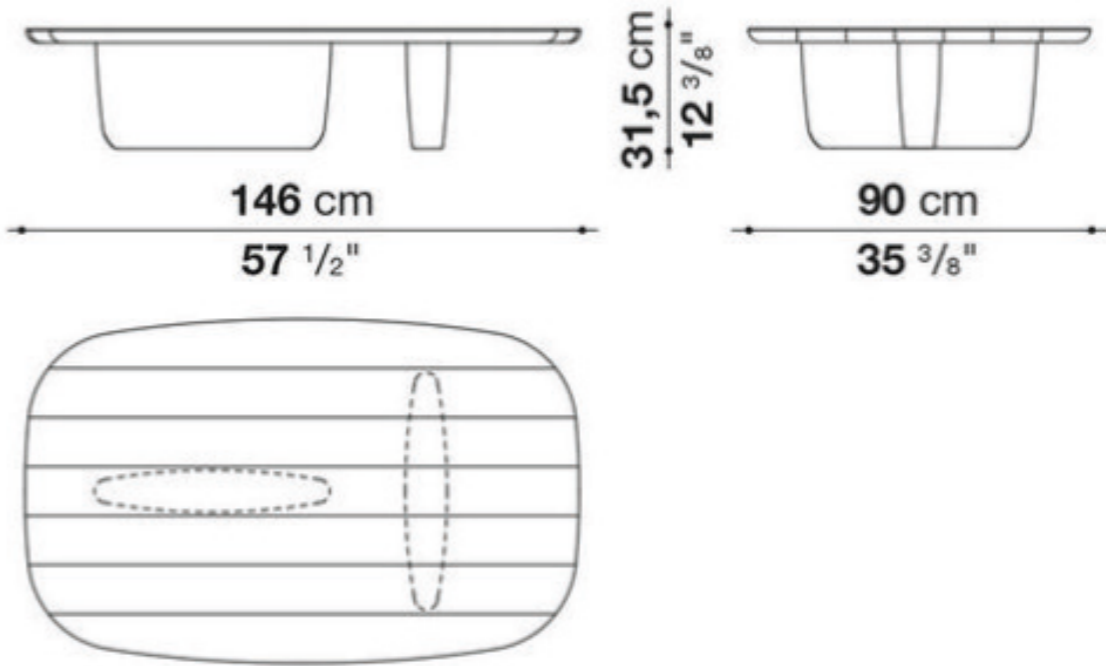
| | |
|--------------------|-----------------------|
| Sofa: | 84.5"w x 38"d x 30"h. |
| Mattress: | 60"w x 71"d x 5"h. |
| Seat depth: | 24". |
| Back height: | 27.5". |
| Diagonal depth: | 29.5". |
| Comfortably seats: | 3. |

| | |
|--------------|-----------------------|
| Sleeper: | 84.5"w x 90"d x 30"h. |
| Seat width: | 79.5". |
| Seat height: | 18". |
| Arm height: | 27.5". |
| Leg height: | 3". |

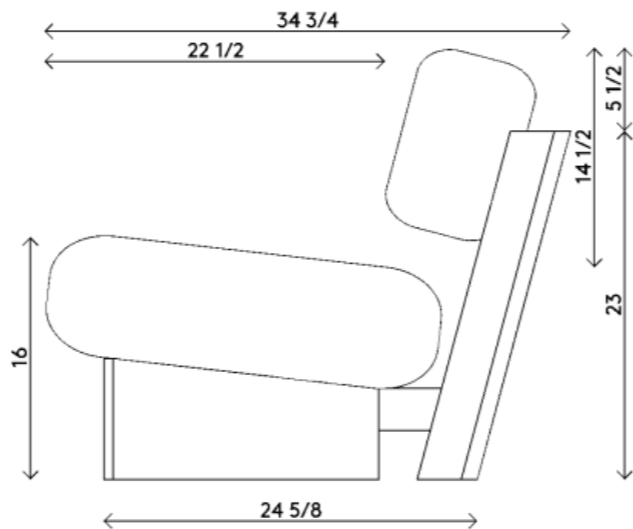
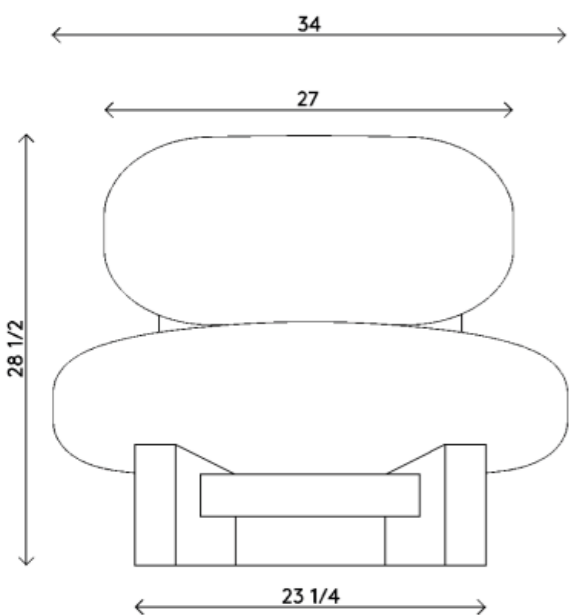
FURN-02
CENTER TABLE



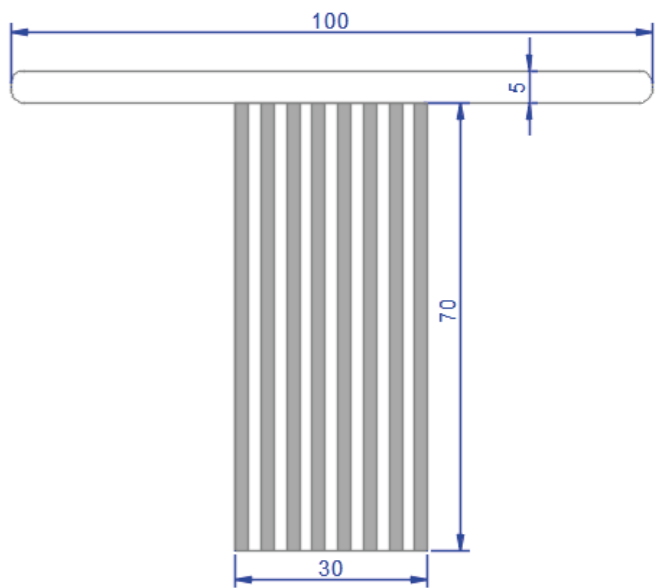
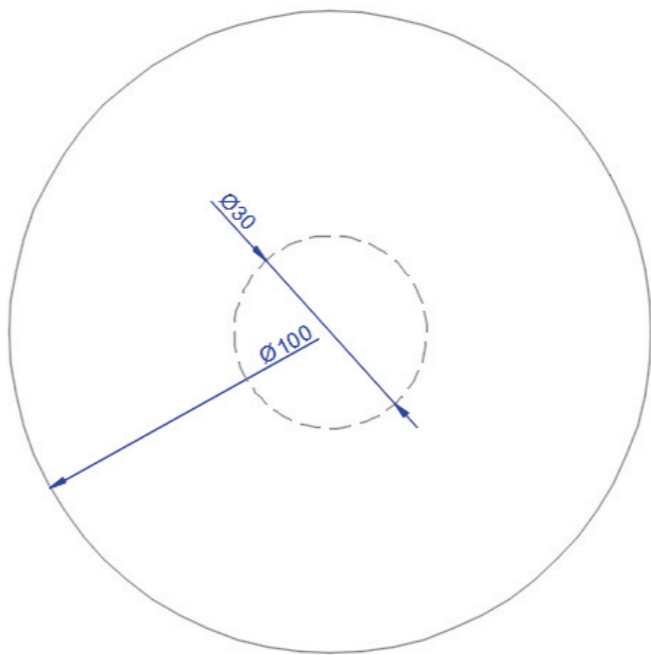
T140L



FURN-03
ARMCHAIR



FURN-04
DINING TABLE



2cms thick louvres
placed 2 cms apart

FURN-05
DINING CHAIR



Stained black



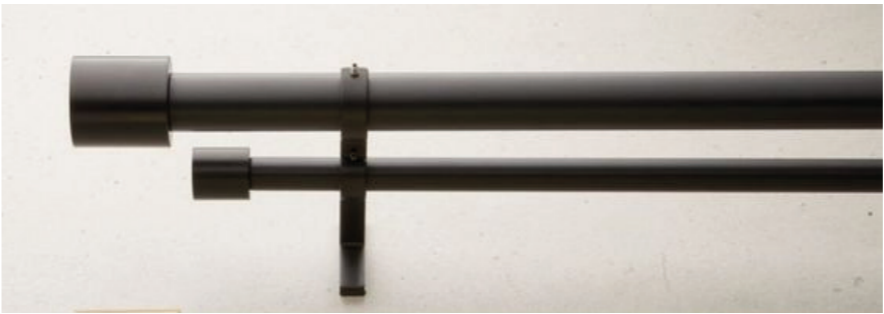
SOFT FURNISHING



**18 meter Main Curtain
Pinch Pleat
100” long
Checks
with Black Rod**



**18 meter Sheer Curtain
Pure Linen soft
98” long
Cream colour**



**Double curtain rod
70” to 115” length**

SOFT FURNISHING



Cow skin Faux hide rug
One per room



Local pattern runner rug
2'6" wide x 6' long

THARBUSDESIGNS MANALI
+91-7740049879 | admin@tharbusdesigns.com | tharbusdesigns.com

Copyright 2022 tharbusdesigns Manali